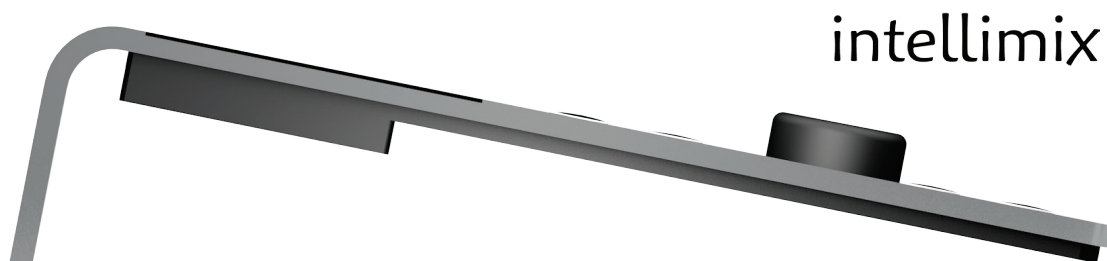


# Specs that make you smile.



## Control Unit

Display	Light Hi-Res color TFT transreflective widescreen with 250Cd/m2
Displaysensor	5-finger touch sensor, gesture ready
Faders	4 x G-Touch® 120mm faders with multifunction position indicators
Keys	12 x illuminated sealed hard keys (dual color)
Chassis	Solid aluminum body with integrated SD-Card reader

## Base Unit 19“

<b>Inputs*</b>	
Mic/line inputs	2 - XLR, balanced, with selectable sensitivity -77 dBu ... +18 dBu
Line inputs analog	2 - XLR, balanced, max. +24 dBu
Line inputs analog	2 - RCA, unbalanced, max. +18 dBu
Line inputs digital	3 - AES3/EBU with sample rate converters
ADAT-S/PDIF	1 - TOS Link, selectable ADAT 8-channel input or S/PDIF stereo input
USB	1 - multichannel PUC 16 mono or 8 stereo inputs with SRC
AoIP (DANTE)	1 - RJ45 4 mono inputs/outputs
<b>Outputs*</b>	
Line outputs analog	4 - XLR, balanced, max. 24 dBu
Line outputs analog	2 - RCA, unbalanced, max. 24 dBu
Headphone	2 - 1/4" jack stereo
Line output digital	3 - AES3/EBU with sample rate converters
ADAT-S/PDIF	1 - TOS Link, selectable ADAT 8-channel output or S/PDIF stereo output
USB	1 - multichannel PUC 16 mono or 8 stereo outputs
AoIP (DANTE)	1 - RJ45 4 mono outputs
<b>Other*</b>	
GPI/GPOs	2 - GPI on optpcoupler + 4 - GPO from PhotoMOS relay
APC-Extension-Ports	4 - RJ45 powered Ethernet for audio, power, control
<b>Options</b>	
Internal extension slot	1- for other AoIP standards (Livewire, AES67)
SFP Cage	2 - for MAD1

\* channel count in mono